

FOLD



Fold

A playful shape that makes recycling good-looking! Fold is made of sheet metal and fits in environments where the requirement for durability is significant, without compromising on design. The lid's unique design is both stylish and obscures the rubbish for neater storage. The modules can be combined with different lids, preferably in groups to create an exciting element in the office, gym, or the local sports arena.

Facts

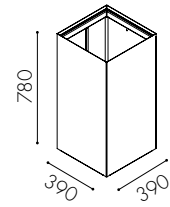
Material: 1 mm sheet metal in standard white powder coat
Available in any colour
Container volume: 72 l
Bag size: 125 l
Gap size: 540 x 143 mm (standard lid), available in other variants
Protection tray is available as an option
Adjustable feet are standard
Labels: Cut-out decal in vinyl plastic and adhesive decal according to Nordic standards



Fold

W5011 Container with lid W5031 lacquered in 9010

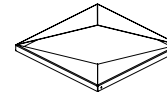
Fold



W5011

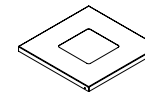
Fold container for 125 l bag

Sheet metal lid



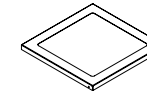
W5031

P1. (Standard)
Gap size H: 144



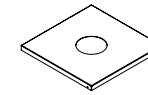
W5032

P2.
Gap size W: 170, H: 170



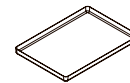
W5033

P3.
Gap size W: 300, H: 300



W5034

P4.
Gap size Ø 120



W5020

Protection tray

Powder coated sheet metal



9010
Standard



Other colour
Additional fee

